

Introducing the
TI-Navigator 2.0
Classroom Learning System

Karen Droga Campe
Teachers Teaching With Technology
International Conference
March 2005

skcampe@optonline.net or karen.campe@yale.edu

The TI-Navigator Classroom Learning System

The TI–Navigator™ system from Texas Instruments provides the hardware and software tools you need to set up a wireless classroom network so that the teacher’s computer can communicate with the students’ calculators.

The TI–Navigator™ system includes tools that allow teachers to

- Create and manage classes on the classroom network.
- Transfer files between your computer or calculator and your students’ calculators.
- Monitor your students with screen captures and polling.
- Perform various interactive activities with your students to enhance your lessons.
- Use different tools to create, distribute, and analyze educational content.
- Install TI Graphing Calculator Applications (Apps) on your students’ calculators.
- Customize materials for differentiated student needs.

TI-Navigator has two main components that make it work:

- TI-Navigator computer software. The TI-Navigator computer software contains the tools and options you need to run your wireless classroom network.
- TI-Navigator calculator software. The TI-Navigator calculator software contains the tools that you and your students need to exchange information with each other through the TI-Navigator network.

① OVERVIEW: TI-NAVIGATOR TOOLS

The TI-Navigator computer software contains the following interactive tools to communicate with students:

Learning Check Creator: Lets you create assignments to run on TI calculators and send the assignments to your students.

Activity Center: Contains various activities you can use to interact with your students during your lessons. With the Activity Center, you can run interactive activities with your class involving lists, graphs, points, and equations.

Quick Poll: Lets you send polls to your students and receive their poll responses.

Screen Capture: Lets you capture your students’ calculator screens and display them on your computer.

Class Analysis: Lets you collect and analyze answers to *Learning Check* assignments, as well as use a slide show to review the results with your students.

② USING NAVNET ON A CALCULATOR (LEARN CHECK)

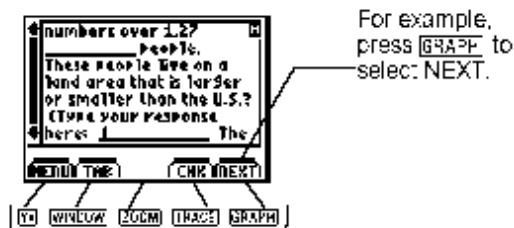
Starting the App:

1. Press **[APPS]** to see a list of Apps available on your calculator.
2. Select NavNet and press **[ENTER]**, then any key to continue.
3. The TI-Navigator Home Screen will be displayed.
4. Choose 2: Network Apps.
5. Choose LearnChk.
6. Select an assignment from the list using **[▲]** and **[▼]**, then press **[ENTER]**.



Completing an Assignment:

1. LearningCheck will prompt you to enter your Username. Notice that the upper right corner of the screen displays **[ALPHA-LOCK]**, indicating that Alpha-Lock is already active. Type your Username (3-32 characters), then press **[ENTER]**.
2. The next screen is the Item List for all questions in the assignment. Move the cursor to the first item you wish to answer, then press **[ENTER]**.
3. Each LearningCheck screen uses “softkeys”. The bottom of the screen will have up to 5 options that are linked to the top row of buttons on the calculator (**[Y=]** **[WINDOW]** **[ZOOM]** **[TRACE]** **[GRAPH]**). Simply press the button that is under the option you want.



4. Answer the question that is asked. (See p. 3 below for details on question types.)
5. Press the Next softkey (**[GRAPH]** button) to go to the next question.
6. Some parts of some questions may be too long to fit on one line. A **×** at the right side of the screen indicates that you can press **[▶]** and **[◀]** to scroll and view the full text.
7. To insert special characters in your answer, such as = or other symbols,
 - press the Menu softkey (**[Y=]** button).
 - Choose Special Characters.
 - Press the Done softkey (**[GRAPH]** button) to return to the question
8. To pause the LearningCheck App to use the other features of the calculator, press the Menu softkey (**[Y=]** button) and choose Pause App. Return to the App by pressing the **[APPS]** button.

9. When you have viewed all of the questions in the assignment, you return to the Item List screen for the assignment. A D is displayed to the left of all questions you have answered. Return to any questions you need to.
10. Your answers are automatically stored in a file with the same name as the assignment name, except that the answer file begins with the letter U. For example, if the assignment is called ANGLE, the answer file is called UANGLE.

Answering Multiple Choice Questions:

1. Press the down arrow to move among the question choices.
2. If the choices are part of an image, press the EPic softkey to view the image, and press the Tab softkey (WINDOW button) to move among choices.
3. Press ENTER to select your choice.
4. Press the Next softkey (GRAPH button) to move to the next question. ↵ Pressing ENTER a second time will *deselect* your answer, and will *not* move you to the next question.

Answering Fill-in-the-blank Questions:

1. Press ENTER to select the blank.
2. Type your answer or select from the drop-down list.
 - If a text answer is required, the A appears in the upper right of the screen, indicating that Alpha-Lock is already active. If you need to include a number, simply press the ALPHA button to turn off Alpha-lock.
 - If a numeric answer is required, no A appears, and any non-numeric keys are ignored.
3. If necessary, select the Tab softkey (WINDOW button) to move to another blank.
4. Press CLEAR to clear the answer field if necessary.

Answering Open-Response Questions:

1. Read the question in the upper field, scrolling with ▲ and ▼ if necessary.
2. If scrolling was necessary, then a EAns softkey will be available to move to the answer field. Once in the answer field, a EQ softkey will be available to move to the question field.
3. Type your answer. Watch for the A in the upper right corner. A space character [] is available above the 0 key.

Answering Sequence Questions:

1. Use ▲ and ▼ to move the cursor to the item you wish to move.
2. Press ENTER to select the item (to “pick it up”).
3. Use ▲ and ▼ to move the item to its new location.
4. Press ENTER to place the item (to “put it down”).
5. Continue until the items are in the desired sequence.

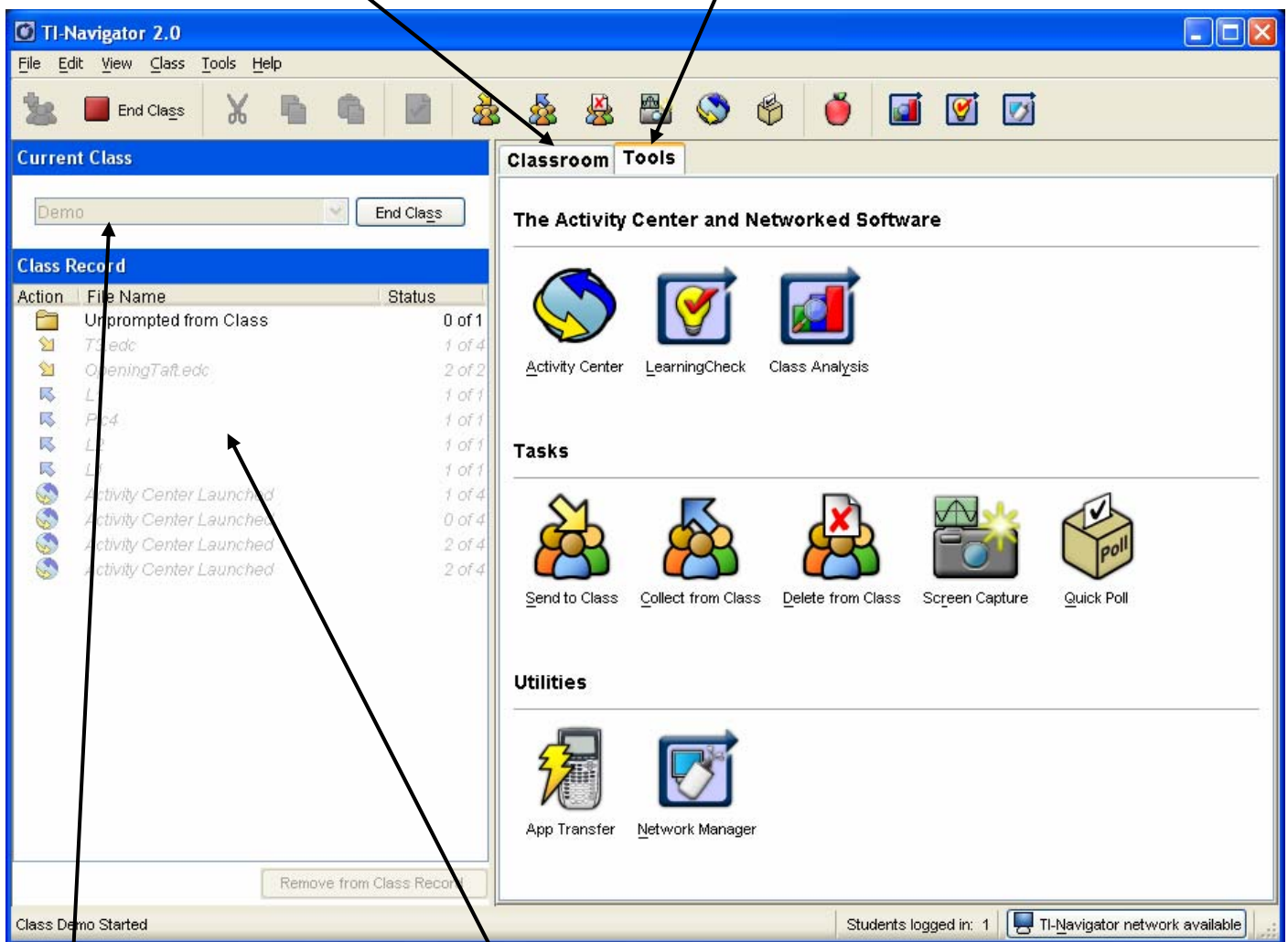
③ THE TI-NAVIGATOR SOFTWARE TOOLS

The TI-Navigator Home Screen

The TI-Navigator home screen looks like this:

The Classroom tab allows you to view the students in the class & add, remove, or edit students. You can view students in a list or in a seating chart.

The Tools tab (shown) contains icons to launch the various tools or to initiate transfers between teacher and students.



The Current Class Pane shows the active class.

The Class Record Pane shows the current and historical activity of the selected class. It includes all teacher-student transfers.

④ **LearningCheck Creator**

The LearningCheck Creator software is the main tool to create assessments within TI-Navigator. It can also be installed as a separate program, without the rest of the Navigator system, to allow you to create assignments away from the classroom.

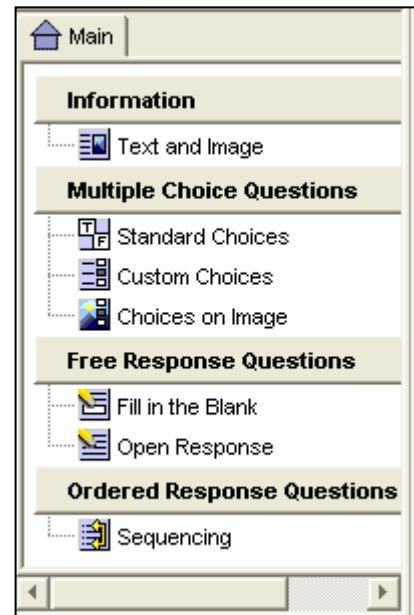


When you first click on the LearningCheck Creator icon on the Tools tab of the home screen, click OK to accept the “guest” profile name.

Work Area & Creating Questions:

The right side of the LearningCheck work area shows the various question types available for you to use in your assessment.

1. Simply click on one of the question types to create a new question.
2. A template will appear in the work area to prompt you for all the needed information.
3. When your question is complete, click OK.
4. Continue to create items as desired. You can give each item a name or use the default that appears.
5. You can include images in any question. The lower right area of each question template allows you to browse to a saved image on your computer and view it on your selected calculator.
6. You can include special characters in your questions.
 - While on the question template, choose Character Map from the Tools menu.
 - Choose your device from the drop-down list.
 - Characters that do not display properly on your chosen device will be “grayed-out”.
7. You can change the name of your document by double-clicking on “Document 1” on the left side of the work area. This brings up the Document Information window, where you can input various types of information about your document.
 - The Document Title is the name that students will see on their handhelds. It will be truncated to the first 7 digits, so choose this name carefully.
 - Document Type allows you to choose between “Examination” and “Self Check”; choose “Self Check” only if you wish your students to see the answers as well as the questions.



Preview:

☞ A great feature of the LearningCheck software is the ability to preview how the questions will appear on the students' calculator handhelds.

1. Select Preview from the Tools menu and choose either to preview the selected item or all items in your document.
2. Use your keyboard (enter and arrows) and mouse to simulate calculator actions.
3. If there is too much text on a particular line, the student will have to scroll (using the arrow keys) to see it on the calculator screen, so edit your item according.


Using Quick Item Generator:

The Quick Item Generator in the Tools menu allows you to quickly create groups of questions. This is convenient to use as an answer sheet for questions you give to the class orally or on a handout.

Item Banks:

If you have a previously saved document with questions you wish to use in your new document, choose Open Item Bank from the File menu. This allows you to use or edit existing items for your current document without affecting the original document.

Saving Assignments:

1. When you are finished, choose Save from the File menu, or click on the disk icon  on the toolbar.
2. ☞ It is a good idea to give the file a name that helps identify its contents. This is the file name that you will see on your computer.
3. Choose a folder location for the file. The file will be saved on the computer as an .edc document.

Printing a report:

To print a copy of your LearningCheck document, choose Print Summary Report from the Tools menu. You can preview the selected report if desired.


⑤ **Class Analysis**

The Class Analysis tool allows the teacher to immediately look at student results from an assignment. It automatically grades certain question types.






Click on the Class Analysis icon on the Tools tab of the home screen.

Designating the Assignment File:


1. Click on the Choose Assignment for Analysis icon  in the toolbar, or select it from the Edit menu.
2. Browse to a saved assignment file on your computer.

Retrieving an Answer File:

You can retrieve an Answer File in one of three ways.

1. Click on the Collect from Class icon  in the Class Analysis toolbar. This remembers the last question file sent to the class, and automatically asks for the correct answer file.
2. Click on the Collect from Class icon  on the Tools tab of the home screen.
3. If the answer file is already collected and saved on your computer,
 - Click on the Add Student Answer File icon . This allows you to browse to the Collect folder; find the folder with the proper collection date and open it.
 - You can select multiple student answers by clicking while pressing the Shift or Ctrl key.

Viewing Results:

1. You can view the results in different ways by choosing the “Class Summary”, “By Student”, or “By Item” tabs in the window.
2. Within these tabs, drop-down lists and buttons allow you to move through the students and items.
3. On the “By Student” and “By Item” tabs, there is a check box which allows you to temporarily exclude a student or item from the analysis.
4. You can create a slideshow of the results by clicking on the Class Results Slide Show icon  in the toolbar.
5. These options are also available in the View menu.

Printing a Report: Choose the Print icon  in the toolbar, or choose Print Report from the File menu. You can preview the selected report if desired.

Exporting and Saving Analysis Information: From the File menu, you can Save the analysis, or Export Percent Scores to a file readable by spreadsheet programs.

⑥ **Activity Center**

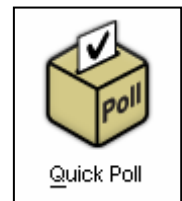
The Activity Center allows the teacher to run interactive activities in the classroom. Students contribute points, equations, or data lists to the classroom view, which updates in real time.



There are 5 data tabs in the Activity Center, which allow the class to view Lists only, Lists & Graphs, Graphs only, Graphs & Equations or Equations only. The teacher and students can create and exchange data sets, view them in various representations.

⑦ **Quick Poll**

The Quick Poll tool allows for anytime questioning of the class. Student responses are immediately available for analysis and discussion.



⑧ **Screen Capture**

At anytime while a class is in session, the teacher can capture and view students' calculator screens.

