

TIP SHEET

Connecting your TI83+™ to your computer


To connect your computer to your TI83+™, you will need the following:

- A Graph Link Cable:
Two types are available--
a serial cable (black) and a
USB cable (silver)

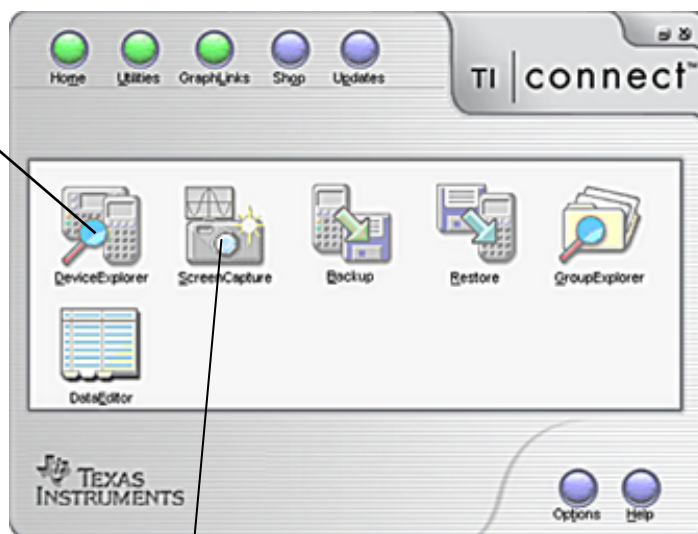


- Connect Software:
Available without charge at

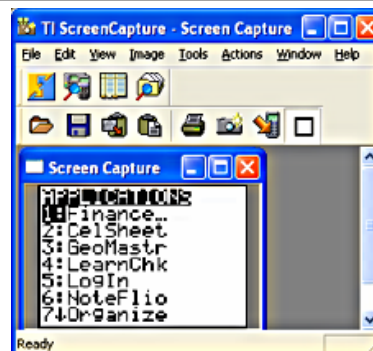
<http://education.ti.com/us/product/accessory/connectivity/down/download.html>

1. Begin by installing the TI Connect software on your PC. When the installation is complete a Connect icon will be found on your desktop.
2. Connect the Graph link cable to your computer and plug it into your device.
3. Go to your PC desktop and double click on the Connect icon  which will open the TI Connect home screen:

Clicking on this icon will list the contents of your TI83+™. Files (Application Variables) and Applications can be dragged and dropped on to this screen to add them to the TI83+™. Files can also be dragged from the screen to your desktop allowing you to save and transfer files.

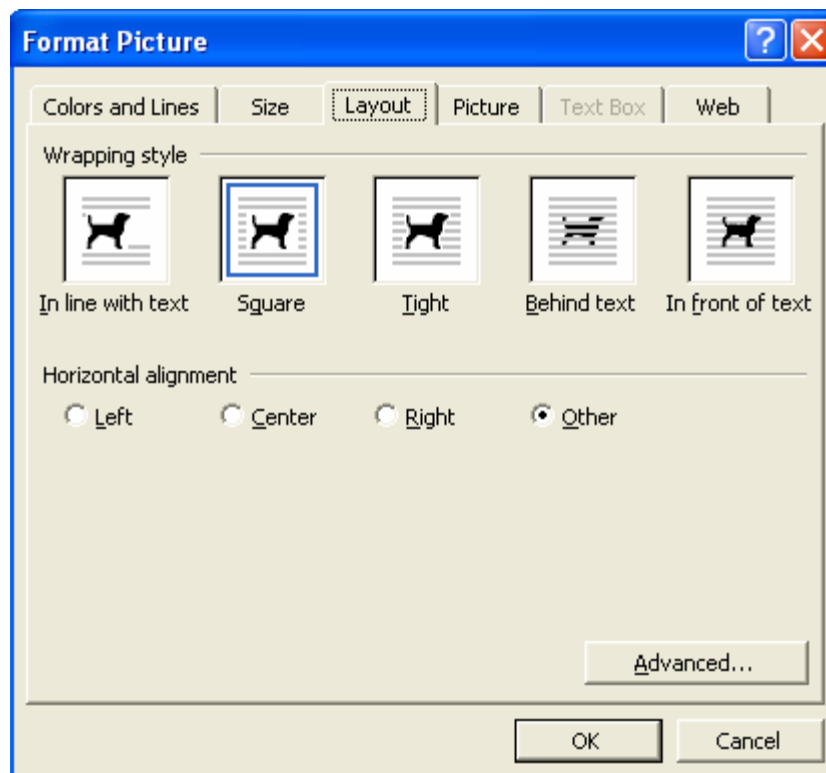


Clicking on this icon will allow you to take a snapshot of your TI83+™ screen. The image can be printed, saved and/or copied into documents.

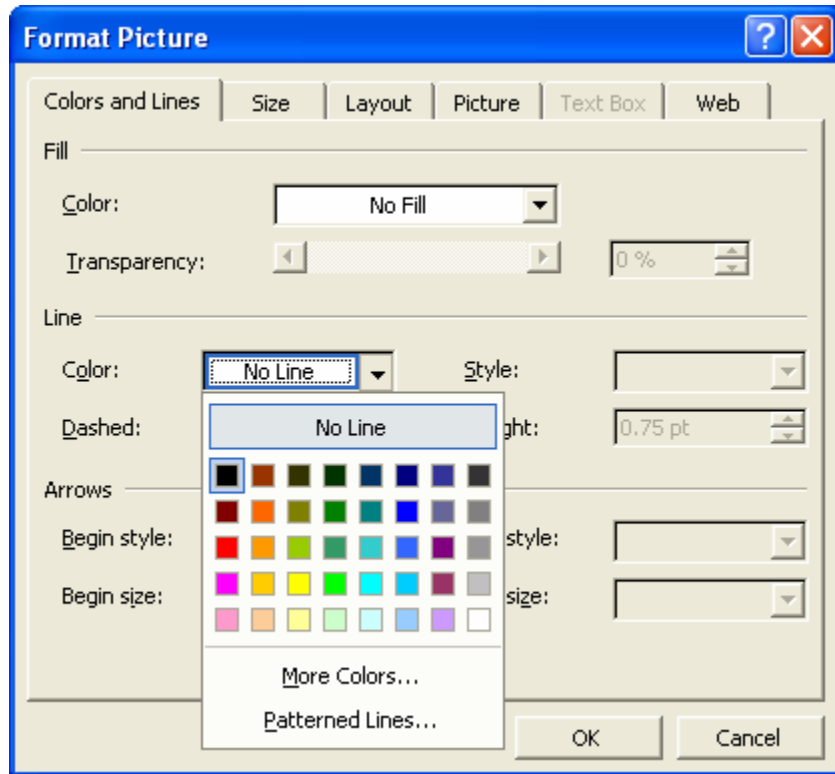


Inserting a Screen Shot Image into a Microsoft Word File

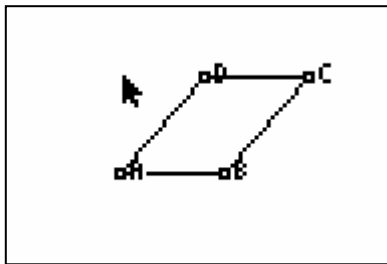
1. Open TI-Connect and attach the silver Connectivity cable to your calculator.
2. Click on the camera icon to capture the image.
3. Copy the desired image to the clipboard by pressing Ctrl-C, or choosing Copy from the Edit menu, or by clicking on the copy/clipboard icon on the toolbar.
4. Open a Microsoft Word document, and paste the image by pressing Ctrl-V, or choosing Paste from the Edit menu, or by clicking on the paste icon on the toolbar.
5. Right-click on the image, and select Format Picture from the drop-down menu. On the Layout tab, choose “Square”, then click OK. This permits moving the image independent of text.



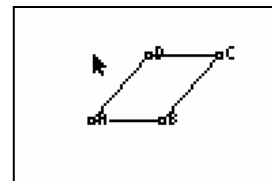
- To put a border around the screen shot image, right-click again on the image and select Format Picture from the drop-down menu. On the Colors and Lines tab, select black for the line color, then click OK.



- The result:



- Note: You can change the size of the image by clicking once on it, then dragging on any of the eight "border points".



- The original screen capture image can be saved as a bitmap, a jpeg or as a calculator image file.
- The original screen capture image can be edited by copying it into the Paint program. You can erase unwanted pixels and select a portion of the image to copy.