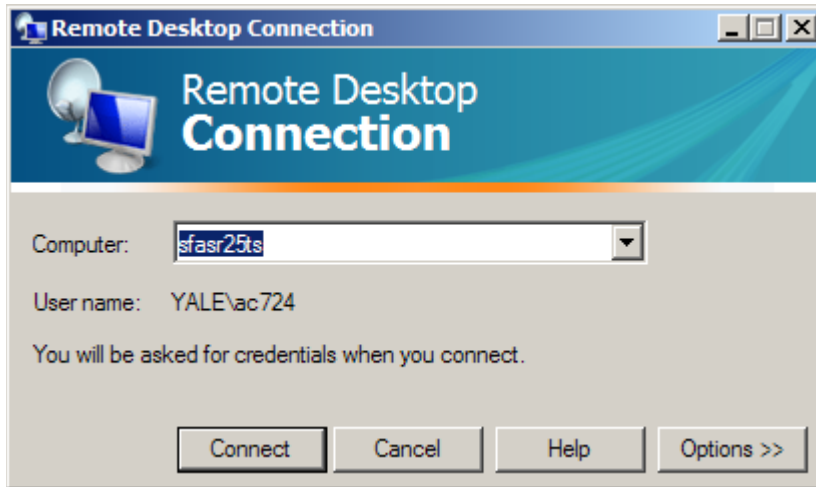
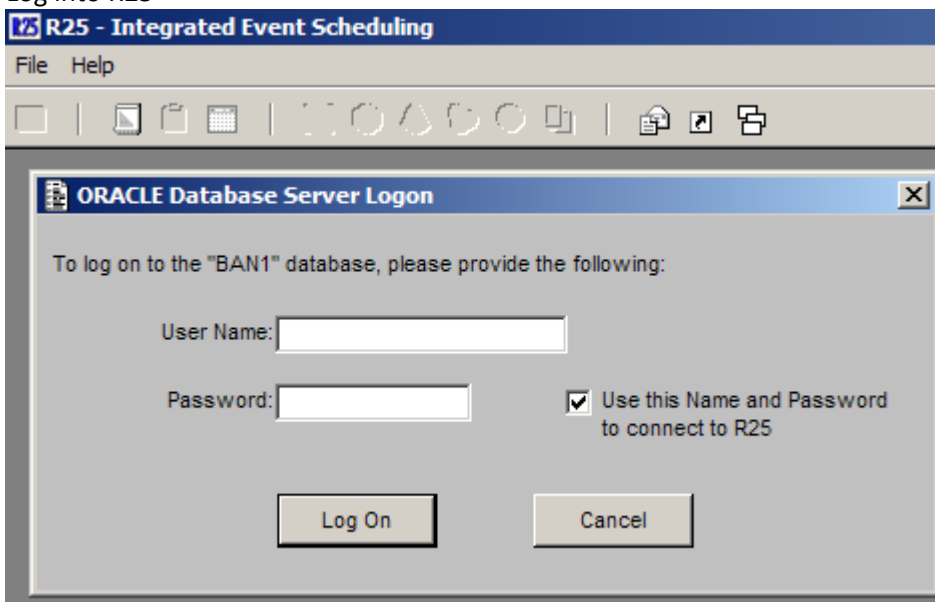


Logon to R25 Terminal Server

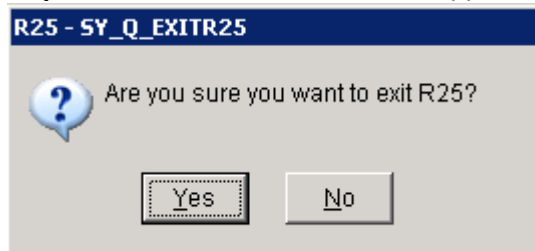
1. Start....All Programs....Accessories...Remote Desktop Connection
2. Type **sfasr25ts** into the open text box
3. Login with your network credentials (R25 will automatically launch)



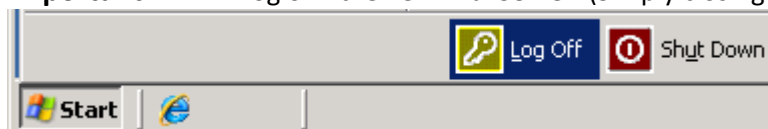
4. Log into R25



Important: Be sure to exit the R25 application



Important: AND "Log off" the Terminal Server. (Simply closing the window will not log you off the terminal server)



Webviewer URL: https://sfas-r25.its.yale.edu/wv3/wv3_servlet/urd/run/wv_space.DayList