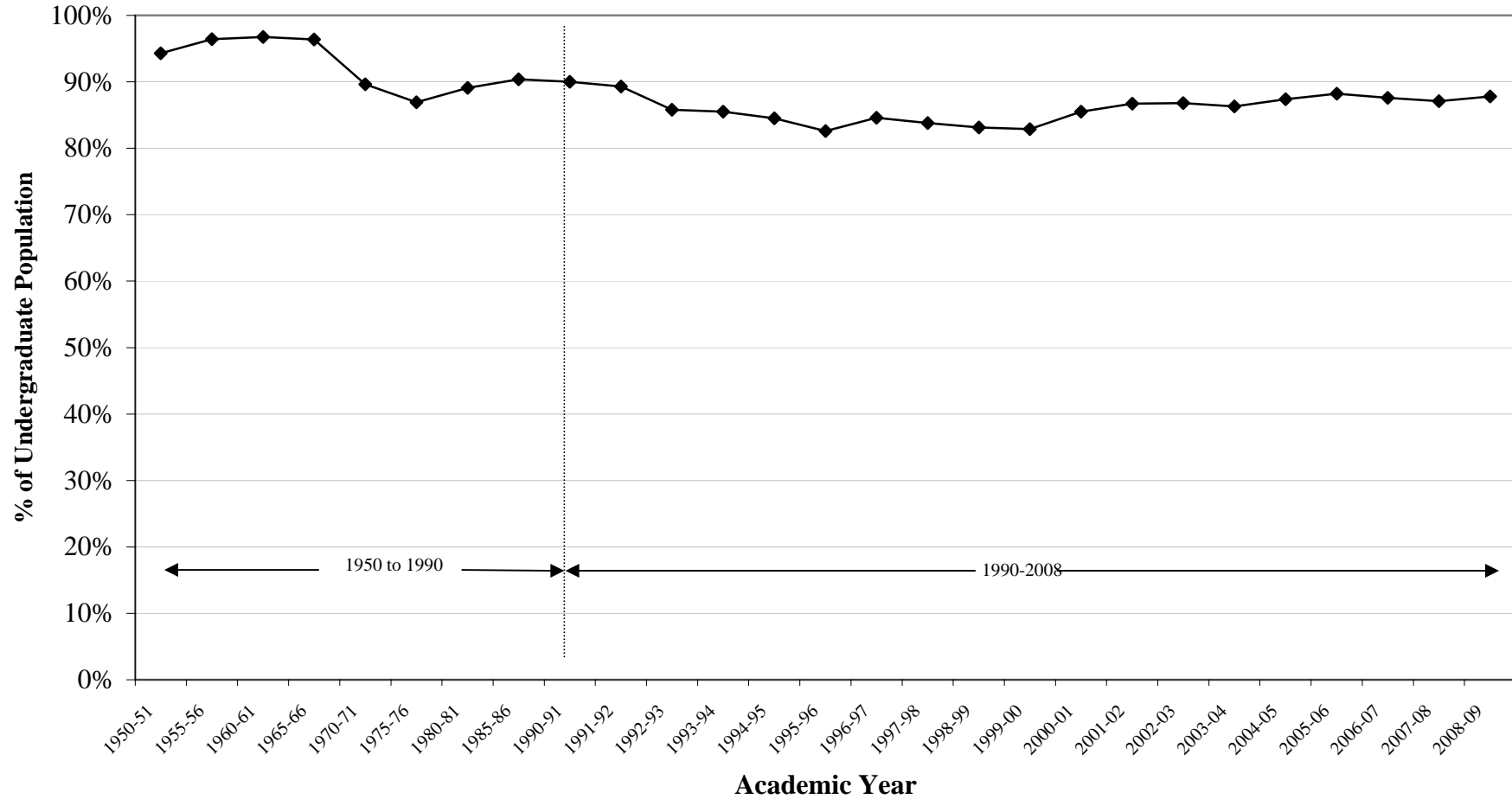


**Yale University**  
**Percentage of Yale College Students Housed in the Residential Colleges**  
**1950-2008 (a)**



**Note:**

(a) The total undergraduate enrollment count includes some students who were not degree candidates for some earlier years. In 1969, women were first admitted to Yale College. The housing patterns of the student body reflect that change. Also, in 1996-97, the housing policy changed so that Sophomores, as well as Freshmen, were required to live on campus.