



Converting existing PPTP connections to L2TP – Windows XP or Vista

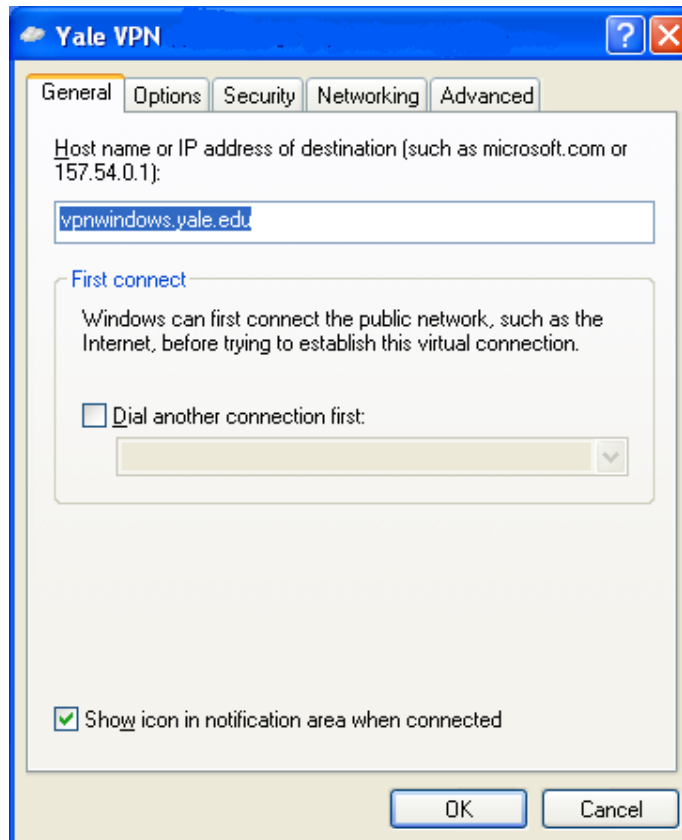
A slightly different procedure is required for Windows XP and Windows Vista

Instructions for Windows XP

Right click the **My Network Places** icon on the desktop and choose **Properties** from the drop-down menu.

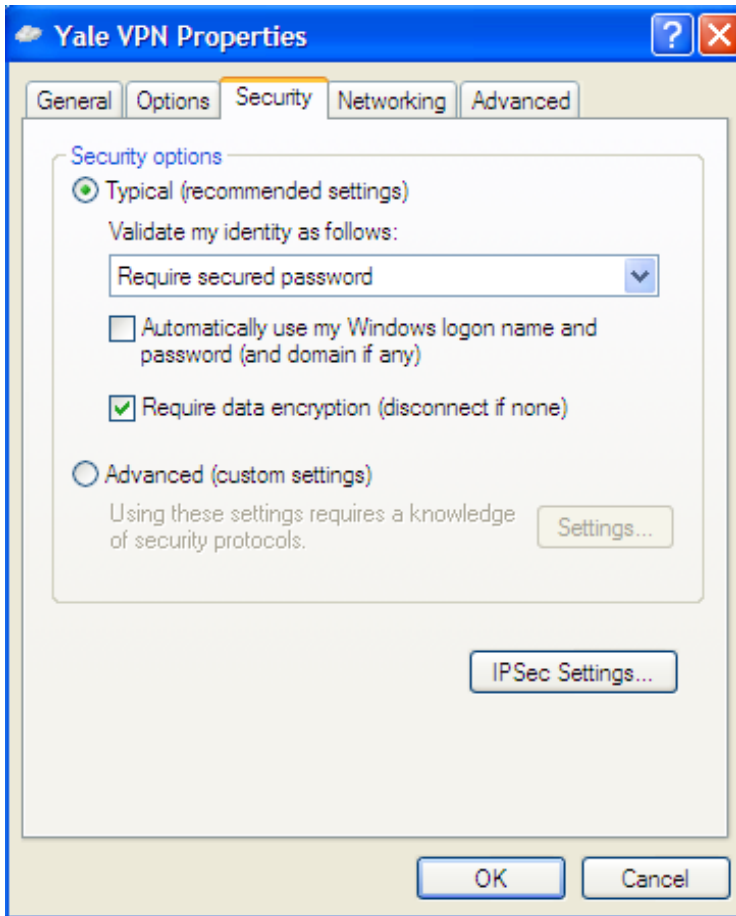
From the Network Connections window, right click on your VPN connection and select **Properties**.

Go to the General tab enter the address **vpnwindows.yale.edu** in the Host name or IP address of destination (such as Microsoft.com or 157.54.0.1): box:

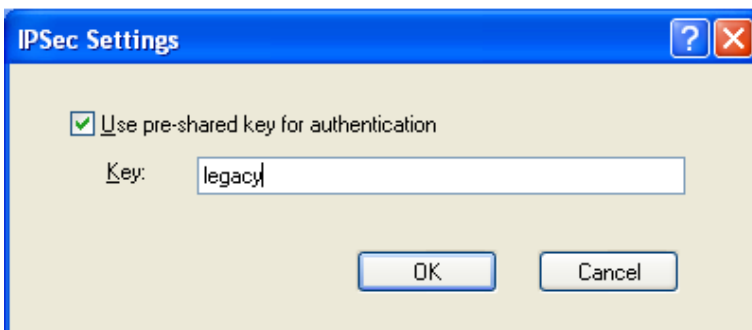


Click the **Security** tab.

Click the **IPSec Settings...** button (lower right).



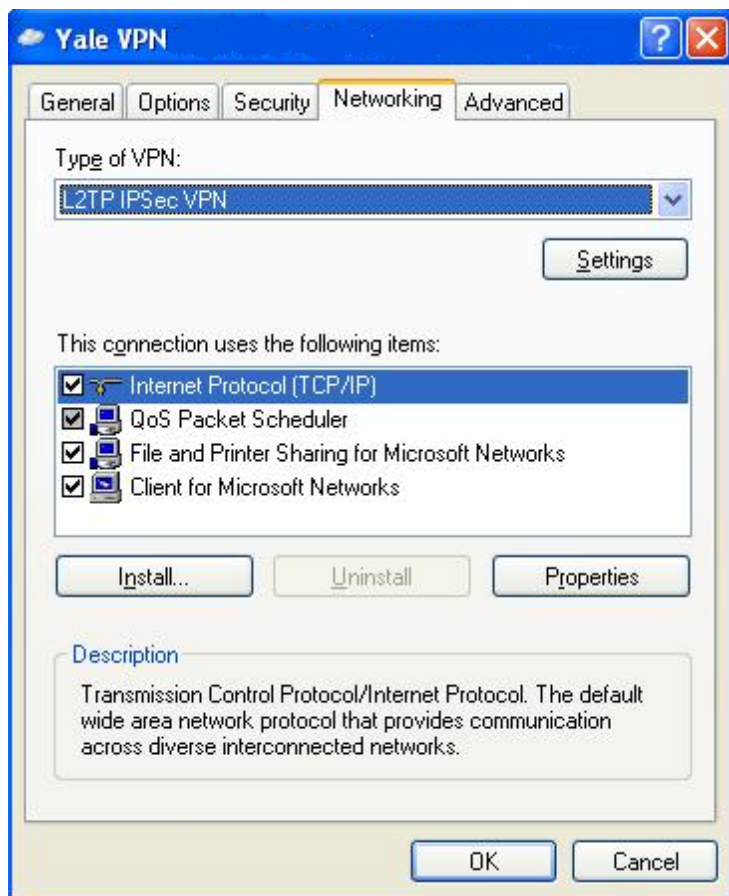
Enter **legacy** as the pre-shared key for authentication:



Click **OK**.

Click the **Networking** tab.

From the Type of VPN: pull-down menu, choose **L2TP IPsec VPN**



Click **OK**.

Instructions for Windows Vista

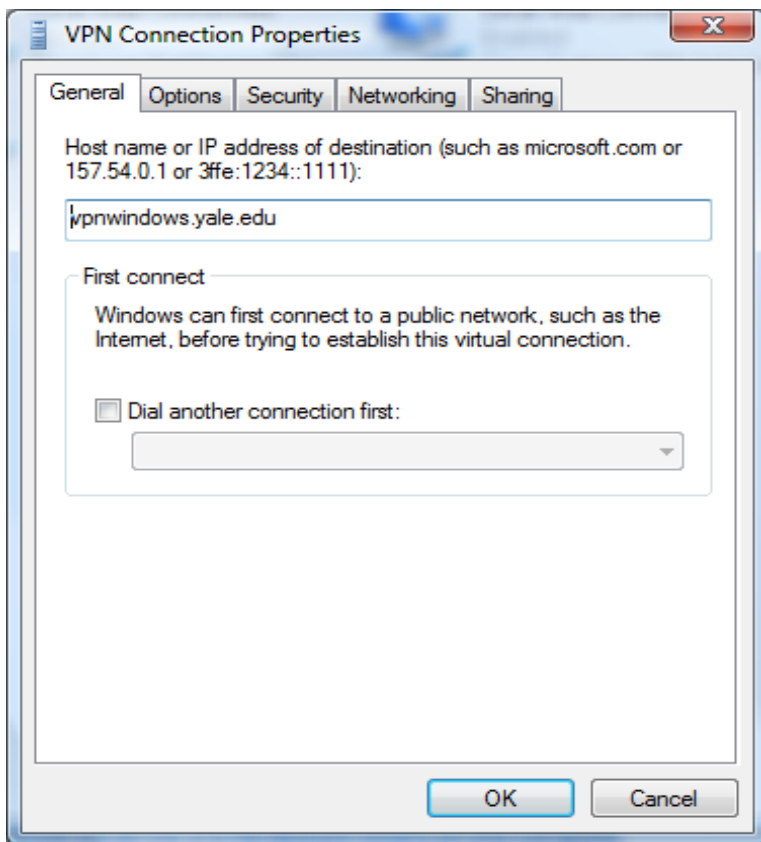
From the Start menu go to **Control Panel**. This opens the “Control Panel Home.”

Click on “Network and Internet” control panel.

Click on “Manage Network connections.”

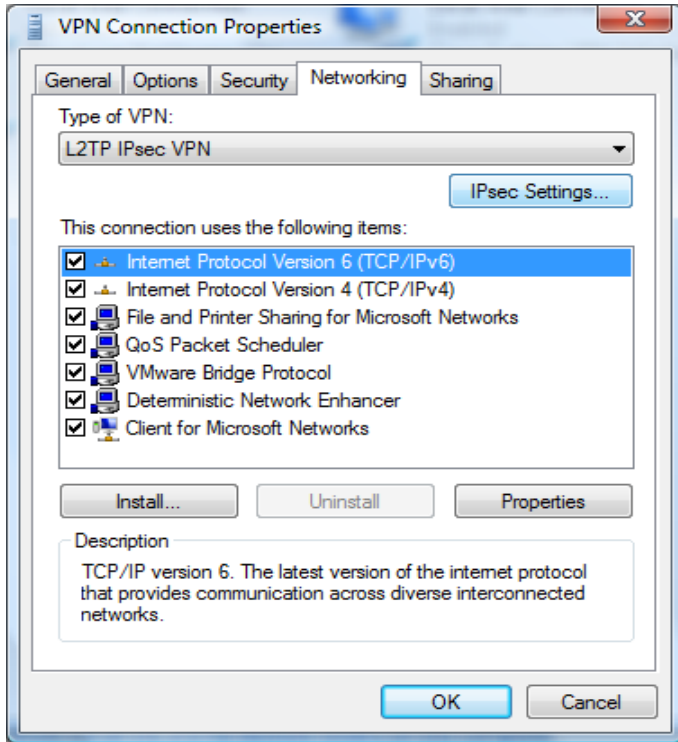
Right click on the VPN connections and choose Properties.

In the General tab enter **vpnwindows.yale.edu** in the Host name or IP address of destination:

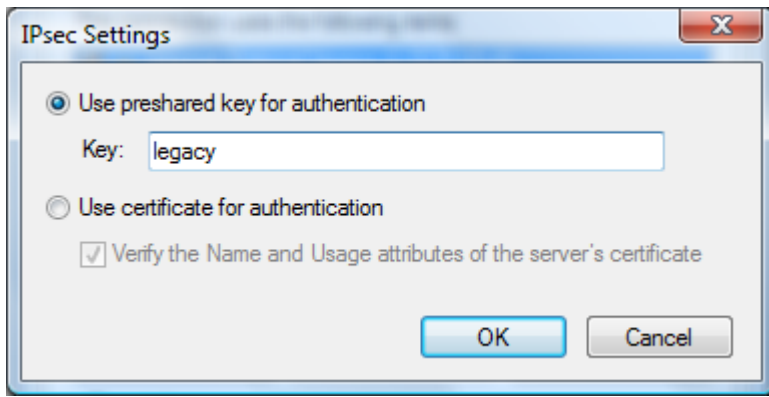


Click the **Networking** tab.

From the Type of VPN: pull-down menu, choose **L2TP IPsec VPN**



Enter **legacy** as the pre-shared key for authentication:



Click **OK**.