



PLAYGROUPS IN NEW HAVEN

For those of you in the community with children under five, there are a number of play groups in New Haven that may be of interest. They are free, and open to anyone with children who would like to join. If anyone knows of other groups that are not on this list, please contact ouiss@yale.edu, so we can update this schedule. Enjoy!

MONDAYS

Toddlers @ Yale This group meets at McDougal Center, HGS 320 York Street, Room B44 (basement, "Family Resource Room and Children's Play Area") from 4pm to 6pm. If you have a child or children, you are welcome to join this group to socialize and chat with other parents, and have your toddler interact with other toddlers. Contact Tanja Dresp at tanjadresp@comcast.net for details.

TUESDAYS

'Round-the-World-Women Meeting The Round the World Women group brings together international women from the New Haven community to discuss current events, work on English, make friends, get to know the area, and learn about other subjects. They meet on Tuesdays at First Baptist Church (corner of Edwards and Livingston Streets in New Haven) at 9:30am. Child care is available in the nursery downstairs. RWW sponsors a Friday playgroup for informal gatherings for parents and their children aged 5 and under. For information, go to www.rww-international.com or send an email to rww_newhaven@hotmail.com.

Stay and Play The New Haven Public Library offers a toddler program for children ages 0 to 3 years called "Stay and Play", upstairs, in their Children's Room. Join them for stories, songs, finger rhymes and games, then playtime - a wonderful opportunity for children to find new playmates and for parents to make new friends. Tuesdays at 11am and Thursdays at 11am. For more information, call 946-8129 or visit <http://www.cityofnewhaven.com/Library>.

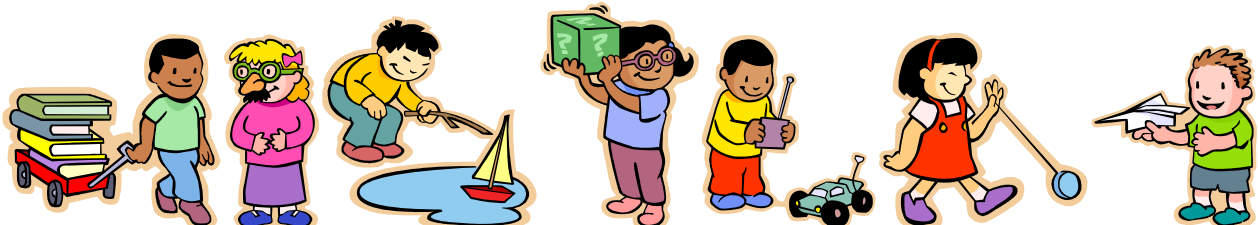
WEDNESDAYS

Toddler Tunes This is a musical program for babies and toddlers. It starts at 11:00am (about 45 minutes long) and they will put out a cup for voluntary donations - You can put a dollar or two (or more if you are feeling generous) in the hat for the performer. In the Episcopal Church on the corner of Humphrey and Orange Streets.

Mommy-n-Me Conversations 10:30am to 12:30pm, in the McDougal Center, HGS 320 York Street, Room B44 (basement, "Family Resource Room and Children's Play Area"). Kid-friendly snack and refreshments provided free. Organized by the OISS at Yale and co-sponsored by the McDougal Center for Graduate Student Life. This is part of the OISS English Conversation Groups offerings. Contact Candace Skorupa Walton at candace.skorupa.walton@gmail.com for details.

OTHER LINKS

- <http://home.earthlink.net/~dblen/> - listing of playgroups, library programs, recreation programs, etc.
- <http://www.yale.edu/graduateschool/studentLife/programs.html> - McDougal Center Family Fellows events and resources



Nature Pals Playgroup 9:30am to 11am, at the Edgewood Park Ranger Station, Edgewood Avenue, Westville area of New Haven (near Ella Grasso Blvd). Ranger Harry Coyle introduces a different animal each week, and there are crafts and snacks. For children ages 0 to 5yrs and their caregivers. For further information contact Ranger Coyle at 946-8028 or Tatiana at 389-4119.

THURSDAYS

Stay and Play The New Haven Public Library offers a toddler program for children ages 0 to 3 years called "Stay and Play", upstairs, in their Children's Room. Join them for stories, songs, finger rhymes and games, then playtime - a wonderful opportunity for children to find new playmates and for parents to make new friends. Tuesdays and Thursdays at 11am. For more information, call 946-8129 or visit <http://www.cityofnewhaven.com/Library>.

FRIDAYS

'Round-the-World-Women Playgroup The group's usual meeting time and location is 9:30am at Bassett Park playground (corner of Ridge Road and Waite Street in Hamden) when it gets warmer. In the event of rain, and during the cold weather, they meet at First Baptist Church (corner of Edwards and Livingston Streets in New Haven). Snacks and drinks are provided. On the 4th Friday of each month, they meet at 10:30am for a potluck lunch. For information, call Meg at (203) 230-5833. For information, go to www.rww-international.com or send an email to rww_newhaven@hotmail.com.

Babies @ Yale The International Center, 421 Temple Street, is happy to host a babies group again for new parents on Fridays from 10am to 12pm. Anyone interested in this group can contact the Kathrin Kress at kathrin.annette@gmx.de.

School of Management Playgroup If you are interested you need to contact them for the schedule at partners@mail.som.yale.edu.

Yale Medical Partners This group has weekday and weekend playgroups. For more info, go to <http://groups.yahoo.com/group/yalemedicalpartners/>.