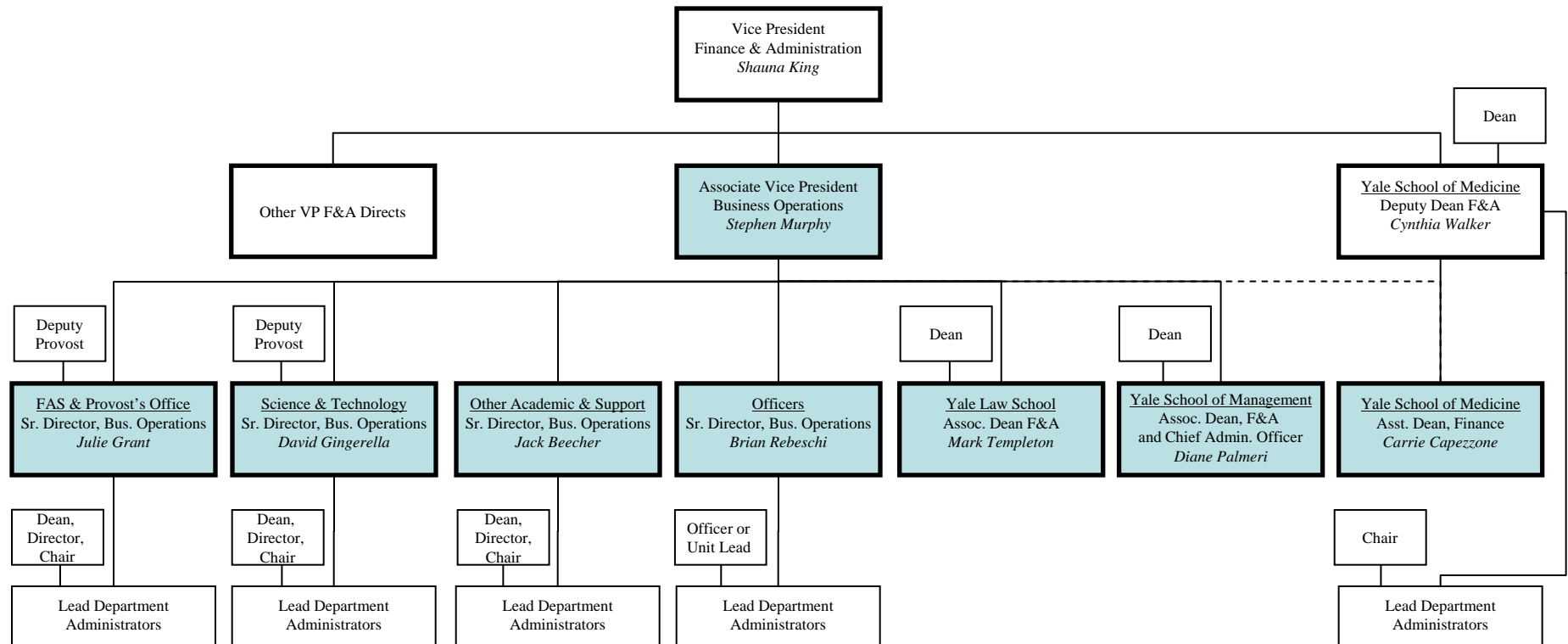


## Business Operations Organization Chart



**NOTE on the Business Operations Leadership Team (or BOLT; in blue):**

*“In support of the research, teaching, and clinical missions at Yale, the BOLT is responsible for ensuring faculty, students, and staff receive high quality financial and administrative support. In the same way department business managers are responsible for ensuring high quality support for their departments, BOLT members are responsible for ensuring high quality support for their respective groups of departments, and together BOLT is responsible for ensuring this for the University in total.” (from the BOLT Team Charter; full text available at [www.yale.edu/fa/businessops](http://www.yale.edu/fa/businessops))*

### Exhibit 3

## Yale University

### Finance & Administration, Business Operations

#### Department, School, and Other Unit Assignments

<u>Science/ Technology</u>	<u>FAS &amp; Provost's Office</u>	<u>Academic and Other Support</u>	<u>Officers</u>	<u>School of Law</u>	<u>School of Management</u>	<u>School of Medicine</u>
<b>David Gingerella</b> Sr. Director, Business Operations	<b>Julie Grant</b> Sr. Director, Business Operations	<b>Jack Beecher</b> Sr. Director, Business Operations	<b>Brian Rebesch</b> Sr. Director, Business Operations	<b>Mark Templeton</b> Associate Dean, Finance & Administration	<b>Diane Palmeri</b> Associate Dean, Finance & Administration and Chief Administrative Officer	<b>Carrie Capezone</b> Assistant Dean, Finance*
<b>FAS</b>	<b>FAS</b>	<b>SCHOOLS</b>	<b>OTHER UNITS</b>	<b>SCHOOLS</b>	<b>SCHOOLS</b>	<b>SCHOOLS</b>
Anthropology Applied Physics Astronomy Biomedical Engineering Chemical Engineering Chemistry Computer Science Ecology & Evol Biology Environmental Studies Electrical Engineering Faculty of Engineering Geology & Geophysics Linguistics M B & B Mathematics Mechanical Engineering Mol, Cell & Dev Biology Physics Psychology Statistics	African American Studies American Studies Classics Comparative Literature East Asian Langs & Lits Economics English Ethics, Politics & Economics Film Studies French German History History of Art Italian Judaic Studies Medieval Studies Music Near East Langs & Civs Philosophy Political Science Religious Studies Renaissance Studies Slavic Langs & Lits Sociology Spanish & Portuguese Special Programs in Humanities Theater Studies Women's, Gender & Sexuality	Architecture Art Divinity Drama Music  <b>OTHER UNITS</b> Art Gallery Athletics Berkeley Divinity School British Art Center Collection Musical Instrum Digital Media Ctr for Arts Envir Health & Safety GPSS/GPCY Institute of Sacred Music Jonathan Edwards Papers Library MacMillan Center Norfolk Summer Program Oral Music History Project University Health Services Yale Review	Development  Facilities Construction & Renov. Facilities Operations New Haven & State Affairs  Finance & Administration Administrative Services Audit Budget Office Business Operations Business Transformation Controller's Office Human Resources ITS Procurement Research Administration SFAS Strategic Planning Workforce Effectiveness  General Counsel  President's Office Chaplain's Office Investments  Secretary AYA Campus Police Office of International Affairs Public Affairs Security Programs	School of Law	School of Management	School of Medicine Epidemiology and Public Health
<b>SCHOOLS</b> Forestry & Environment Nursing	<b>SCHOOLS</b> Graduate School Yale College					
<b>OTHER UNITS</b> Peabody Museum Cooperative Research Machine Shops Marsh Botanical Gardens Post Doctoral Office Sci Shared Serv Branch Science Development Fund Science Stockroom YIBS	<b>OTHER UNITS</b> ISPS Bioethics Center Boswell Papers Conference Services Council of Masters Franklin Papers Globalization Center Institutional Research International Security Studies Koerner Center Lamar Center Language Study Center Office of Int'l Students & Scholars Parliamentary History Project Teacher's Institute Whitney Human Ctr Women Faculty Forum World Fellows Program Yale Summer Session					

**Principles:**

- Every activity on campus with a business activity has a relationship to a business manager for support.
- Every business manager has a relationship to the Vice President for Finance & Administration.

\* Business Managers in YSM continue to report to Cynthia Walker, Deputy Dean for F&A, YSM. Carrie represents YSM on the Business Operations Leadership Team on the Deputy Dean's behalf.

\*\* Agency accounts are handled through the Controller's Office